



GAT MONTHLY MEMBERSHIP PROGRESS REPORT

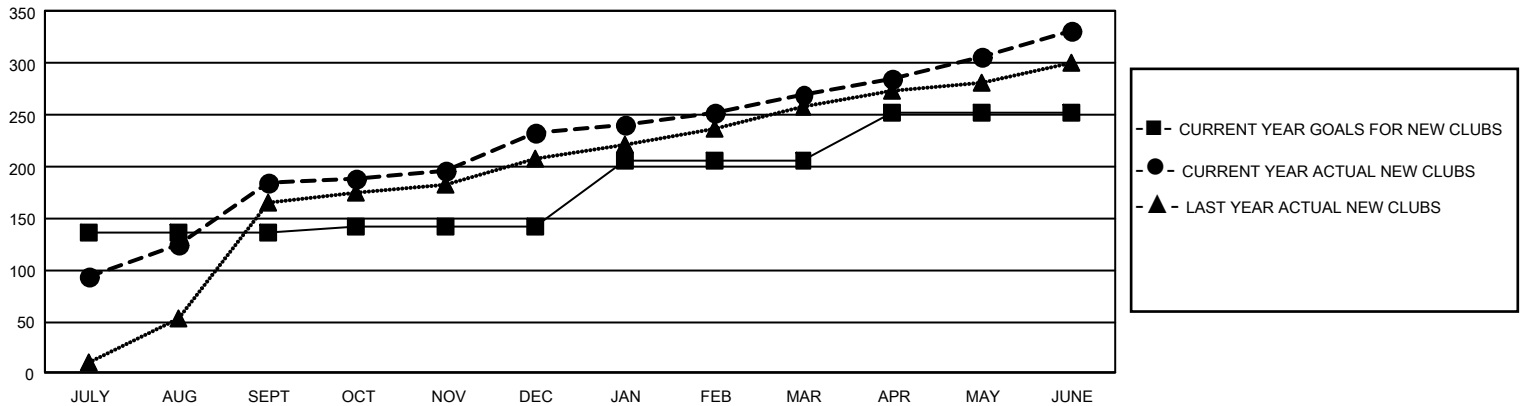
Results as of: 6/30/2025

GMT Constitutional Area 6 - S, Group C

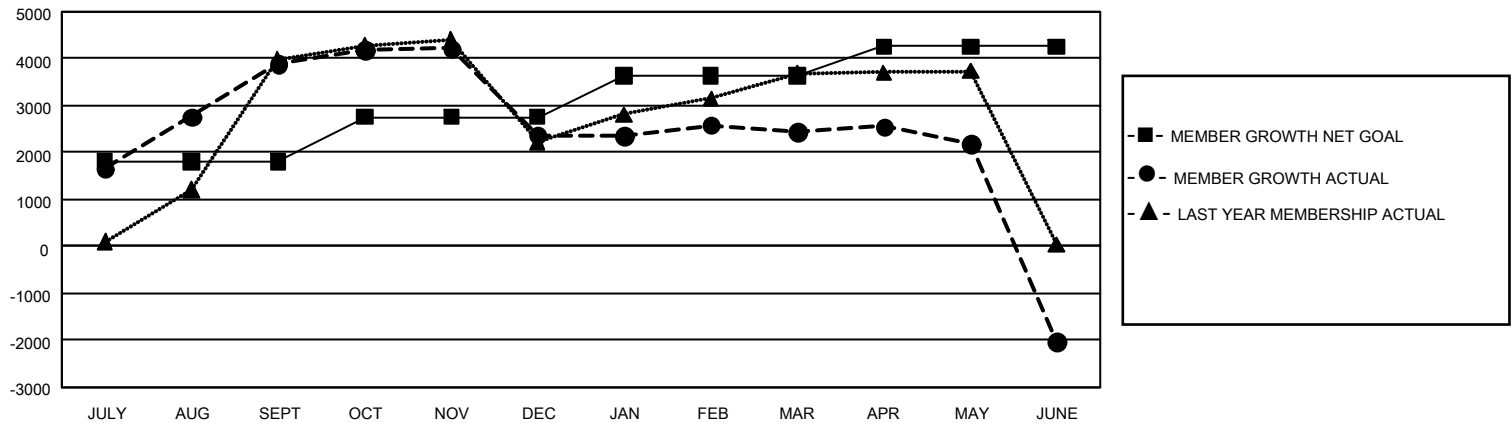
REPORT DOES NOT INCLUDE CLUBS IN UNDISTRICTED AREAS.

Clubs				Members			
RESULTS FOR 2024-2025				RESULTS FOR 2024-2025			
QUARTER	NEW CLUB GOAL	NEW CLUBS	DROPPED CLUBS	QUARTER	MEMBER GROWTH NET GOAL	MEMBER GROWTH ACTUAL	DROPPED MEMBERS ACTUAL (including transfers)
JULY/AUG/SEPT	408	184	33	JULY/AUG/SEPT	1804	6,140	1,873
OCT/NOV/DEC	15	49	81	OCT/NOV/DEC	957	2,684	3,904
JAN/FEB/MAR	195	37	46	JAN/FEB/MAR	879	1,825	1,304
APR/MAY/JUNE	141	62	60	APR/MAY/JUNE	615	3,543	7,215

GOALS AND ACTUAL NEW CLUBS CUMULATIVE



GOALS AND ACTUAL MEMBERS CUMULATIVE



DROPPED CLUBS: 218

1,374 CLUBS OF 2,252 ADDED
1 OR MORE NEW MEMBERS

GENDER DISTRIBUTION

MALE	28,111 (68.49%)
FEMALE	12,908 (31.45%)
NON BINARY	2 (0.00%)
PREFER NOT TO ANSWER	25 (0.06%)

DROPPED MEMBERS

DECEASED	33
CLUB CANCELLED	3,385
OTHER	10,782
TOTAL	14,200

[CLICK HERE FOR
CUMULATIVE MEMBERSHIP
DATA](#)

TOTAL FAMILY UNIT MEMBERS	27,853
FAMILY MEMBERS PAYING HALF DUES	19,495